

5.6 High-resolution 3D seismic

Dr. Tip Meckel

Senior Research Scientist

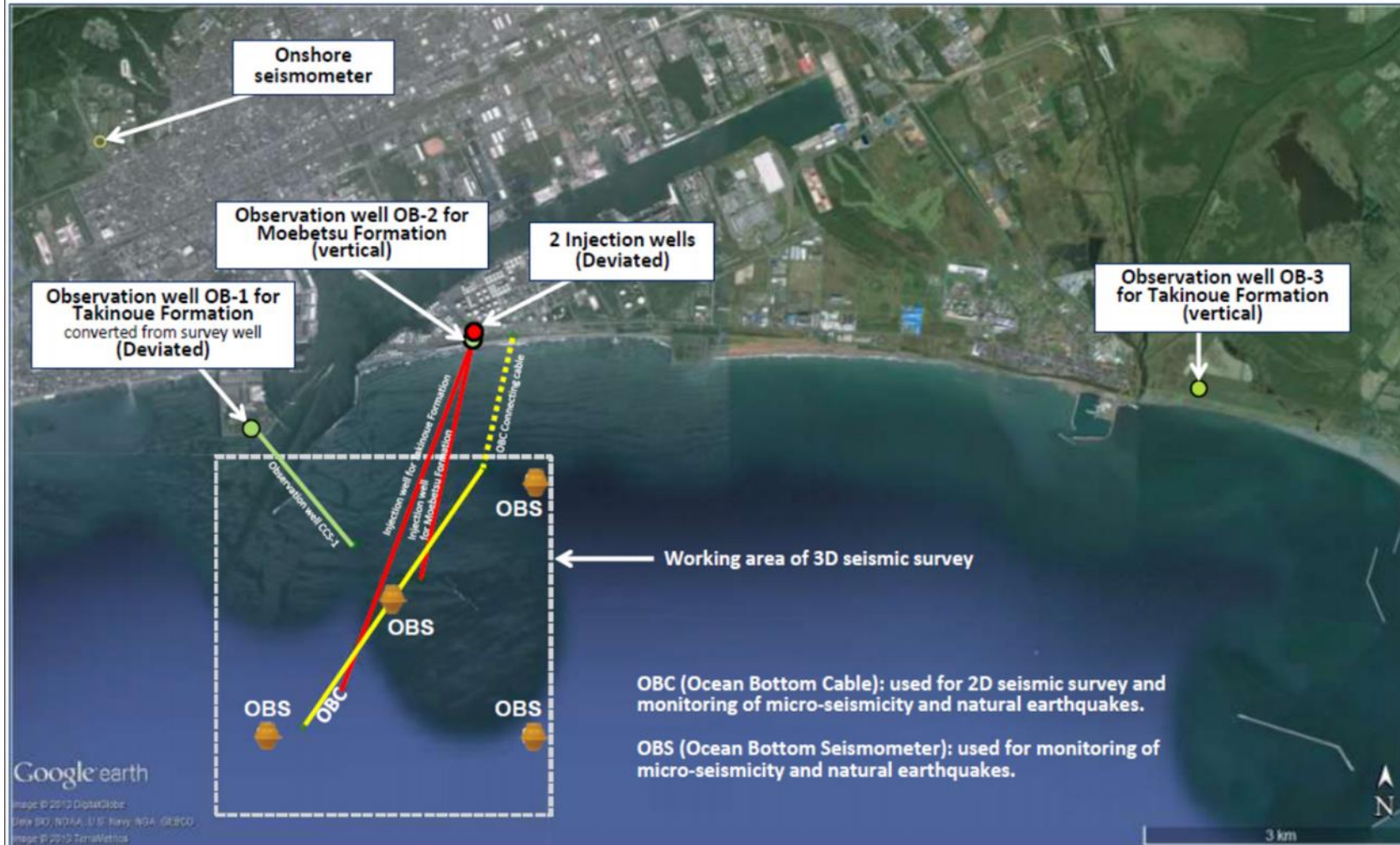
Gulf Coast Carbon Center

Bureau of Economic Geology

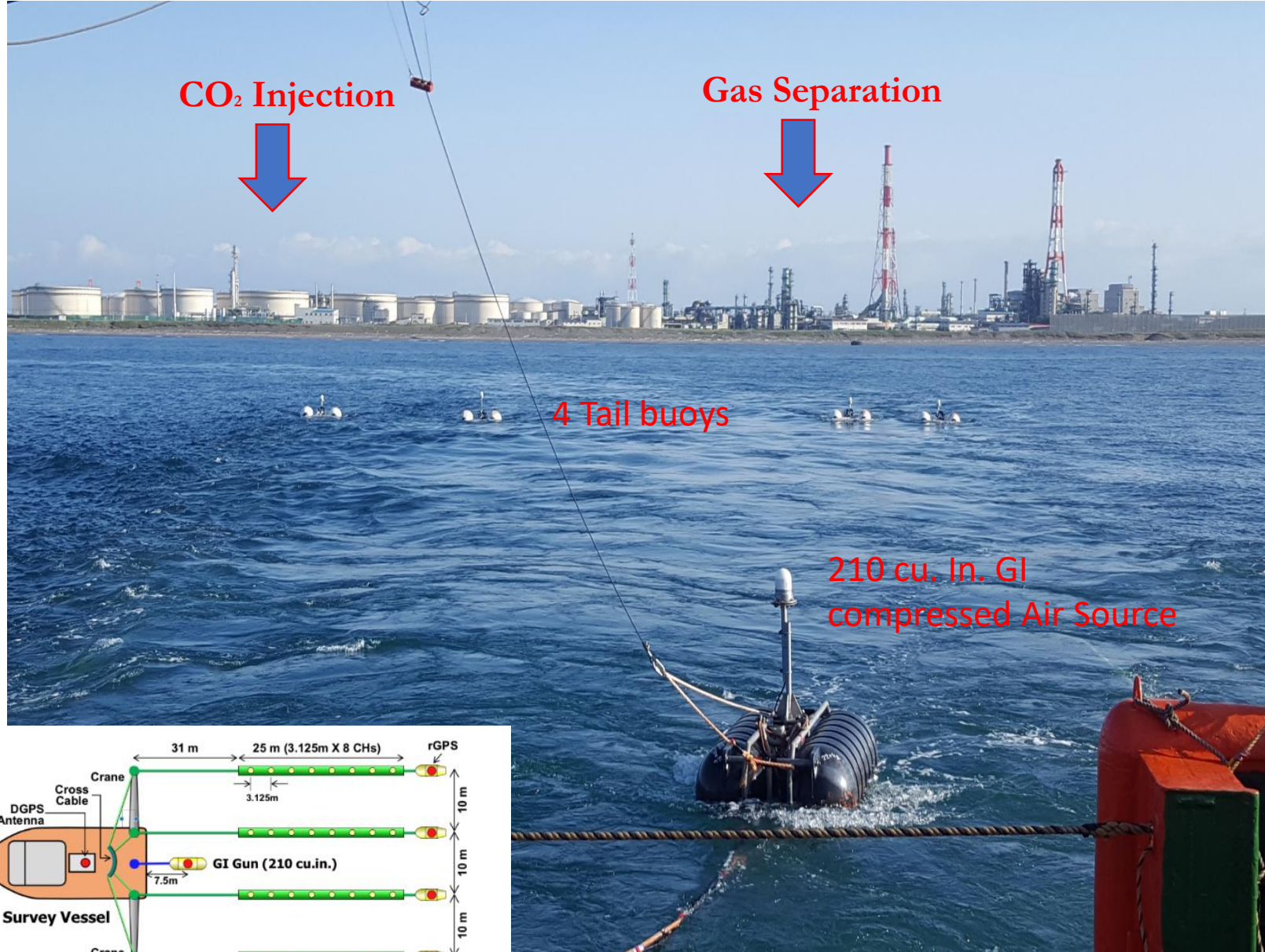
Tomakomai Port, Hokkaido Japan

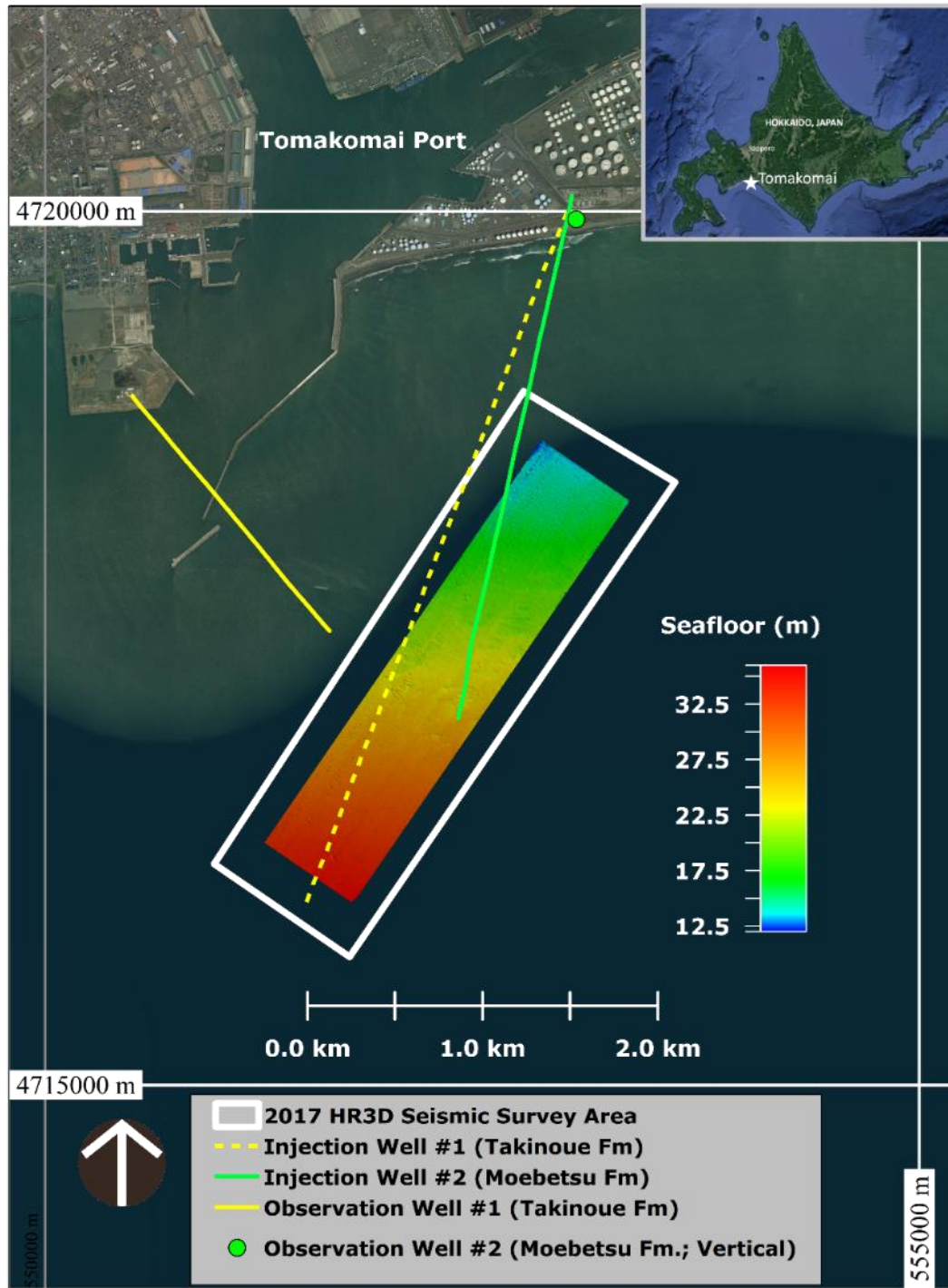
Layout of Monitoring Facilities

15



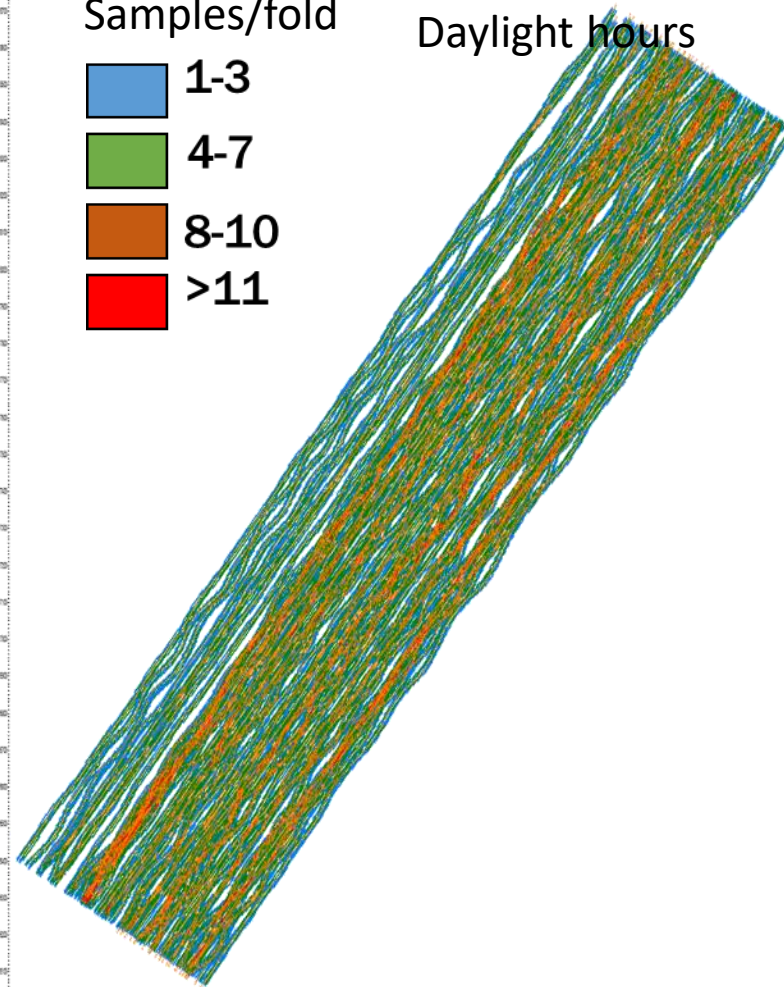
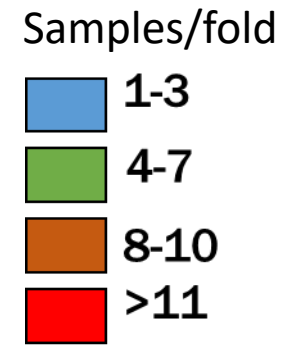
HR3D acquisition August 2017





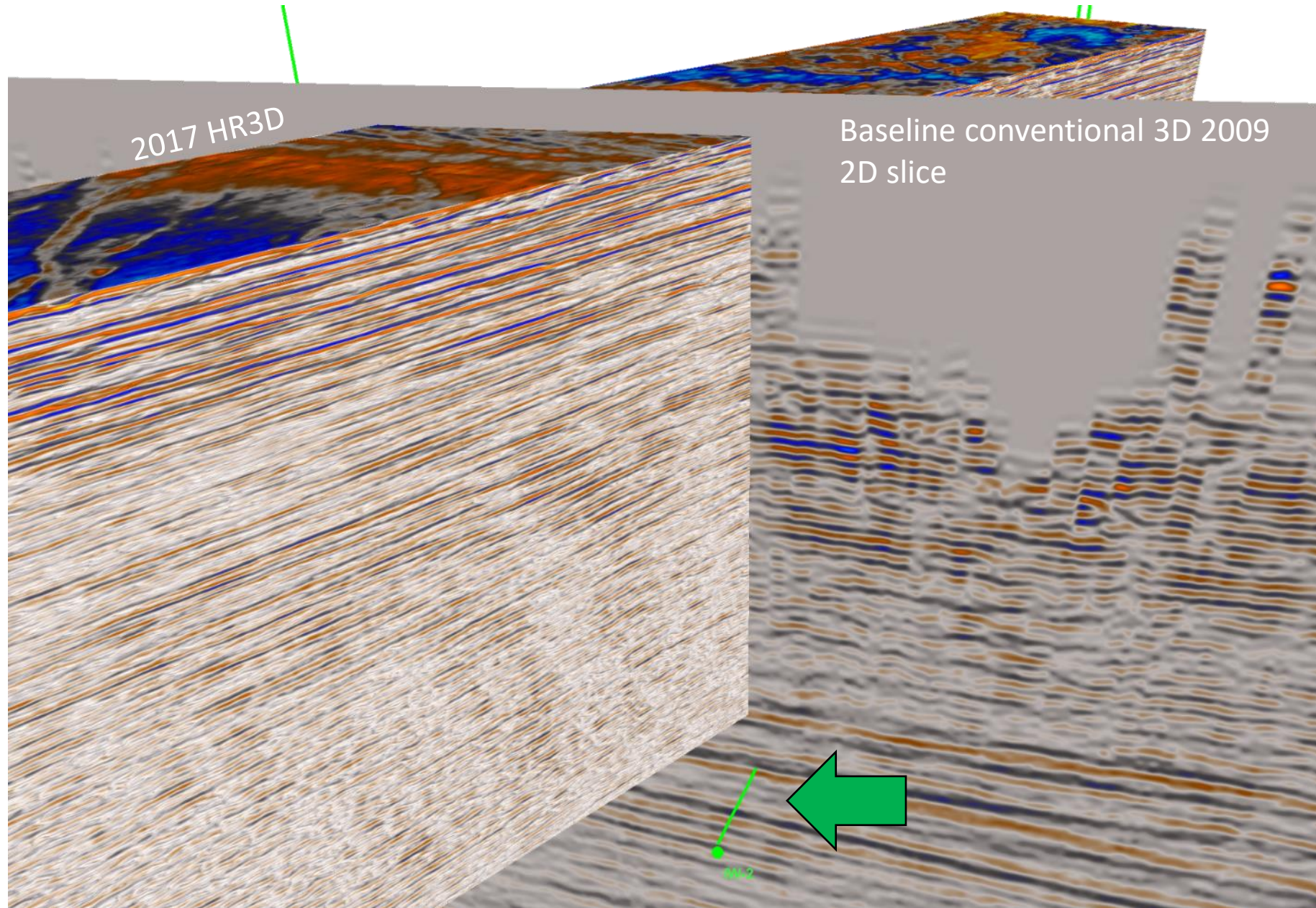
CDP Binning

~5 day acquisition
Daylight hours



Array Design: four streamers of 25m length with 10m inline separation. Each solid-core Geometrics GeoEel-streamer has 8 channels (32 total array channels) with a 3.125m group interval spacing, resulting in a remarkably small final processing bin size of 3x3 m.

HR3D vs Conventional 3D





Contents lists available at ScienceDirect

International Journal of Greenhouse Gas Control

journal homepage: www.elsevier.com/locate/ijggc

High-resolution 3D marine seismic acquisition in the overburden at the Tomakomai CO₂ storage project, offshore Hokkaido, Japan

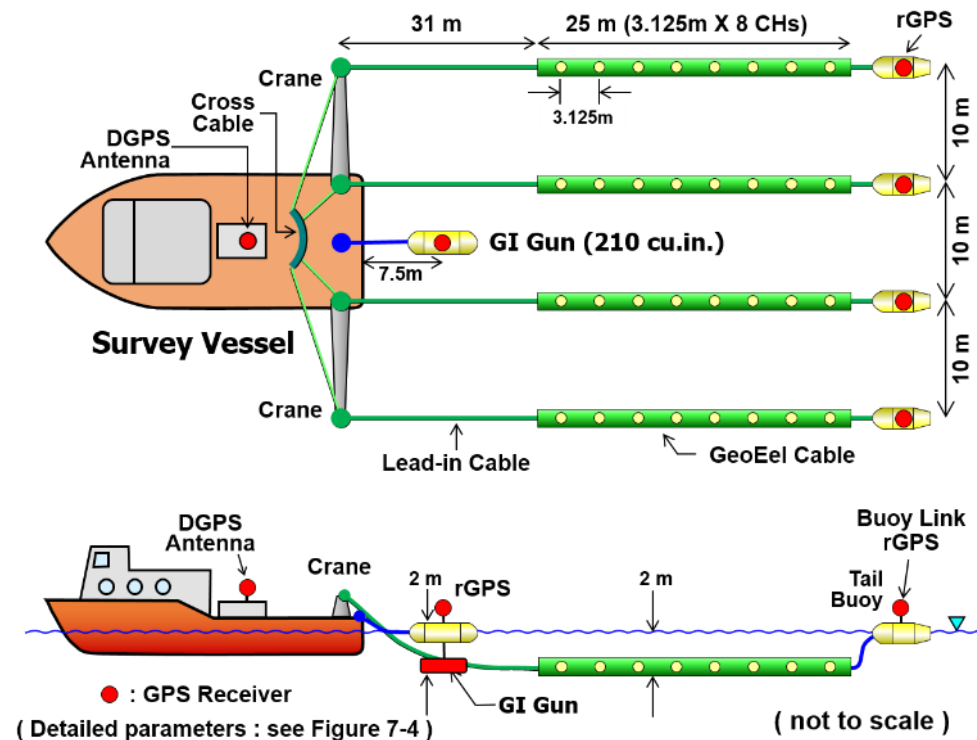
T.A. Meckel*, Y.E. Feng, R.H. Treviño, D. Sava

Gulf Coast Carbon Center, Bureau of Economic Geology, Jackson School of Geosciences, The University of Texas at Austin, Austin, TX, USA



SSRN's Top Ten download list for the [Earth Science Research Network](#):
Seismology topic.

The SSRN is a research repository and an international journal. The ranking demonstrates the study's value to the broader scientific community. [View the full article here.](#)



GoM Surveys

- **3 Legacy surveys: 1012, 2013, 2014**
 - **2 @ San Luis Pass (Galveston)**
 - **High Island**
- **3 funded Surveys: dates TBD**
 - **Environmental assessment underway**
 - **CarbonSAFE II Project(s)?**
 - **GLO Lease Tracts?**

