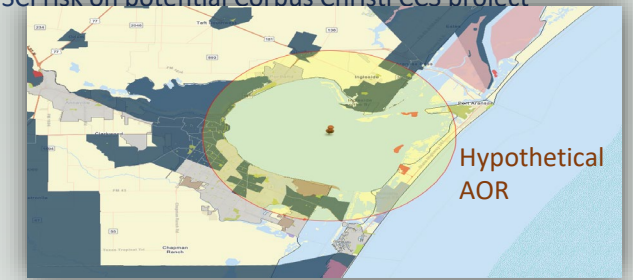


CCS – Community Benefit Plan (CBP): enabling business in the Gulf of Mexico



(Ramon Gil-Egui; Susan Hovorka, Dolores van der Kolk, and Yushan Li)*

SCI risk on potential Corpus Christi CCS project



1. Want a little bite on this topic?



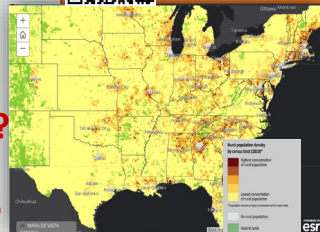
The New Hot Topic on CCS Projects



Get more Background Info

2. CCS tends to be localized in isolated areas (rural or marine)

Where does rural population live? How diverse it is? How diverse it look in the future?



Get more Info on rural socio-economics

4. Why CCS-CBP is Important?



Get more Info

5. Main Goal



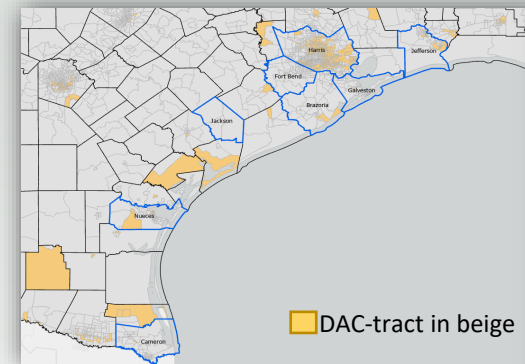
Get more Info

8. First Approach Applying EPA-UIC guidance on SCI for Class VI permit applications to 8 potential storage sites along TX



Get more information about the case studies and Corpus Christi

DACR TX Gulf Coast potential CCUS Hubs Locations

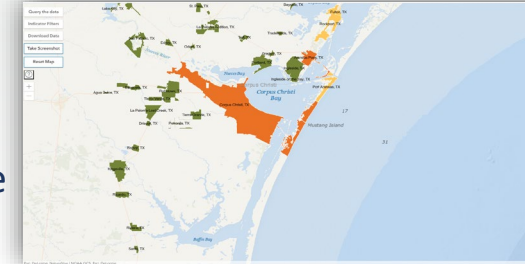


DAC-tract in beige

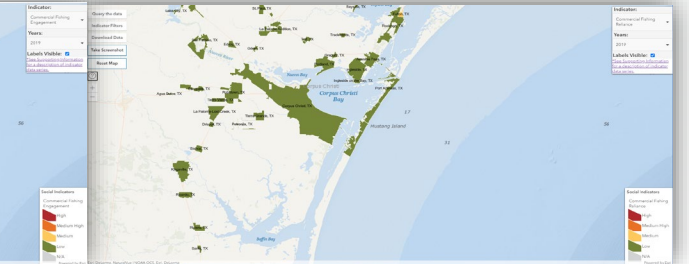
Pre-liminary DAC assessment

county fips	County Name	1) Num of Tracts	2) County Population	3) Scores and Percentiles			4) County Average %	
				County ave DAC score	County ave DAC score national percentile	County ave DAC score state percentile	5) low income <200% fpl	6) energy burden >=6%
Counties' Tracts Average								
48039	Brazoria County, TX Average	51	360,677	16.99	0.52	0.36	0.26	2.73
48061	Cameron County, TX Average	87	421,666	18.37	0.70	0.54	0.56	4.00
48157	Fort Bend County, TX Average	76	765,394	17.03	0.54	0.38	0.24	2.18
48167	Galveston County, TX Average	67	332,885	17.03	0.56	0.40	0.33	3.24
48201	Harris County, TX Average	786	4,646,630	21.10	0.84	0.74	0.38	2.95
48239	Jackson County, TX Average	3	14,816	18.01	0.65	0.48	0.37	3.33
48245	Jefferson County, TX Average	73	254,340	21.10	0.84	0.74	0.39	3.54
48355	Nueces County, TX Average	82	361,540	17.52	0.59	0.46	0.37	3.31
Grand Average		18.34	0.65	0.51	0.36	3.16		
Totals		1,225	7,157,948					
Counties' Desadvantaged Tracts Average (DAC)								
48039	Brazoria County, TX Average	2	4,581	21.44	0.92	0.83	0.50	6.00
48061	Cameron County, TX Average	7	22,837	21.31	0.92	0.82	0.71	6.00
48157	Fort Bend County, TX Average	2	9,081	21.83	0.94	0.86	0.49	3.00
48167	Galveston County, TX Average	3	7,644	21.83	0.94	0.86	0.54	4.33
48201	Harris County, TX Average	411	2,212,137	23.43	0.97	0.93	0.54	3.67
48239	Jackson County, TX Average	29	79,557	22.49	0.95	0.89	0.57	5.03
48245	Jefferson County, TX Average	15	62,457	22.25	0.95	0.88	0.62	4.27
48355	Nueces County, TX Average	15	62,457	22.25	0.95	0.88	0.62	4.27
Grand Average		469	2,398,294	22.08	0.94	0.87	0.57	5.62
Totals		469	2,398,294					
Counties' Desadvantaged Tracts Average (Share on the total)								
48039	Brazoria County, TX Average	4%	1%	29%	77%	132%	93%	83%
48061	Cameron County, TX Average	8%	5%	17%	32%	51%	26%	50%
48157	Fort Bend County, TX Average	3%	1%	28%	74%	124%	104%	37%
48167	Galveston County, TX Average	4%	2%	28%	68%	113%	65%	34%
48201	Harris County, TX Average	52%	48%	11%	16%	25%	41%	25%
48239	Jackson County, TX Average	0%	0%					
48245	Jefferson County, TX Average	40%	31%	7%	14%	20%	46%	42%
48355	Nueces County, TX Average	18%	17%	27%	60%	91%	67%	59%
Grand Average		18%	17%	27%	60%	91%	67%	59%
Share of Totals		38%	34%					

Corpus Cristi Commercial fishery Engagement



Reliance

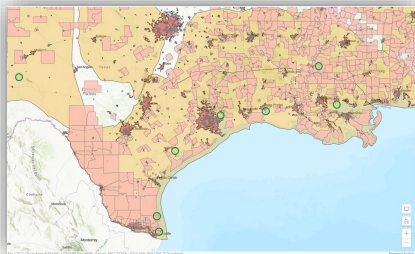


3. What's the CBP risk on your CCS Potential Sites location?

Location areas with lower SCI risk



Get more Info on SCI areas



6. Specifics of CCS-CBP

- **CCS is a complex integrated system**
- **Business models are related to SCI efforts**
- **US UIC rules (groundwater protection guarantor)**
- **And more...**



Get more Info on CCS complexity's impact on SCI assessments

7. Environmental Justice Tools Available

Number and quality are improving:

- **WHCEQ-CEJST**
- **EPA's EJScreen**
- **DOE's Disadvantage Community Reporter (DACR)**



Get more Info on Federal mapping tools

9. What have we learned?

The need for specific tools for isolated areas (rural or marine settings)



Get more Info on reducing your SCI risk



* Gulf Coast Carbon Center, Bureau of Economic Geology, Jackson School of Geosciences, The University of Texas at Austin